



CANDLELIGHTERS  
CHILDHOOD CANCER FOUNDATION OF NEVADA

# Lights the way for children with cancer in Nevada





# NO FAMILY EVER EXPECTS TO HEAR THE WORDS: "YOUR CHILD HAS CANCER"

At a moment like this, the whole family needs support. The emotional, physical, and financial toll can be overwhelming, and the need for support becomes paramount. **Nearly 16,000 children under the age of 19 are diagnosed with cancer each year.**

Southern Nevada families facing childhood cancer need a strong support system to navigate one of life's most difficult journeys.

**Candlelighters provides a lifeline**, offering emotional, educational, and financial support at every stage of diagnosis, treatment, and beyond.





# FROM KITCHEN TABLE TO A COMMUNITY MOVEMENT

In 1978, two local families gathered around a kitchen table, looking for hope not to start an organization, but to survive. That spark of shared support became **Candlelighters Childhood Cancer Foundation of Nevada.**

Today, we stand on nearly 50 years of heart-centered service, still showing up like family for every family.

"We didn't set out to start an organization. We opened our doors."



# MISSION

Provide emotional support, quality of life programs, and financial assistance for children and their families affected by childhood cancer.



# VISION

Throughout their cancer journey, every family receives the support, love and care needed to enable hope and healing.



Together, we can support families facing the journey of childhood cancer.





# THE CANDLELIGHTERS DIFFERENCE

We provide

**SERVICES TO THE  
ENTIRE FAMILY,**

from diagnosis through  
survivorship or  
bereavement

Our support is

**100% FREE TO  
FAMILIES**

regardless of income or  
insurance

We are

**LOCAL, RESPONSIVE, AND  
TRAUMA-INFORMED**

we show up like family

We are

**NEVADA'S PREMIER**

childhood cancer  
foundation

**WE SERVE THE FAMILY-NOT JUST THE DIAGNOSIS.**



# OUR PILLARS OF CARE



## EMOTIONAL SUPPORT



Counseling, grief groups, play/art therapy, and peer support for every family member

## QUALITY OF LIFE



Camp Firefly, holiday programs, and joy-filled gatherings

## FINANCIAL ASSISTANCE



Rent, utilities, medical co-pays, transportation, scholarships and bereavement assistance



# THE REALITIES OF CHILDHOOD CANCER



Cancer is the **#1 disease-related cause of death** for children in the U.S.



The average cost of a hospital stay is **\$40,000**



72% of families **lose over half their income**

"WE WERE DROWNING IN BILLS, GRIEF, AND FEAR. CANDLELIGHTERS WAS OUR LIFELINE."



CANDLELIGHTERS  
CHILDHOOD CANCER FOUNDATION OF NEVADA





# CHILDHOOD CANCER IMPACTS THE ENTIRE FAMILY.



On average, cancer treatment **lasts 2–3 years**



**40% of Nevada families** must travel out-of-state for care



1 in 3 families **can't meet basic needs**

"CANDLELIGHTERS GAVE US MORE THAN HELP,  
THEY GAVE US HOPE"





# CORPORATE GIVING = CRITICAL COMMUNITY IMPACT

When you give, you support keeping families whole through:

## FINANCIAL HEALTH



## MENTAL AND PHYSICAL WELL-BEING



## SOCIAL ENRICHMENT





# FINANCIAL HEALTH

## HOUSING & HOMELESSNESS PREVENTION

Rent, mortgage, and utility assistance keep families safe and stable during treatment.

## SCHOLARSHIPS FOR SURVIVORS AND SIBLINGS

Investing in the future of those forever impacted by childhood cancer.





# MENTAL AND PHYSICAL WELL-BEING

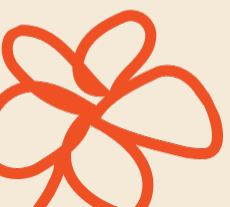
## ACCESS TO LIFE-SAVING MEDICAL TREATMENT

Travel, lodging, and transportation support ensure every child can reach the care they need.

Co-pay assistance for lab tests, scans, and prescriptions ensures every child receives uninterrupted care.

## MENTAL HEALTH & GRIEF SUPPORT

Counseling, peer groups, and healing spaces help families cope with trauma and loss.





# SOCIAL ENRICHMENT

## YOUTH & WORKFORCE DEVELOPMENT

Programs that empower teens and survivors through connection, leadership, and skills-building.

## JOY-FILLED FAMILY EVENTS

Camps, celebrations, and community gatherings that bring light during dark times. Our sponsorship opportunities can create visibility for your brand, engage employees and build lasting goodwill.





# YOUR GIFT ISN'T CHARITY. IT'S LEGACY.



Major donors can change the course of a family's life—at a moment when they need it most.



Provide a family with housing security keeping a family in their home during treatment



Fund trauma-informed counseling for all family members



Send a child with cancer to Camp Firefly to just be a kid again



Assist with college tuition for a survivor or sibling supporting their future

"YOU SHINED THE LIGHT DURING OUR DARKEST DAYS."





# FINANCIAL HEALTH

**Housing Assistance:** Assists with family's rent, mortgage, and utilities ensuring a safe, stable home during treatment.

**Travel for Treatment:** Assists with lodging, transportation, and meals during out-of-state care, allowing families to access life-saving treatment.

**Local Transport:** Provides rides for medical appointments, ensuring families don't miss critical care.

**Bereavement Support:** Funeral Assistance helps families facing the unimaginable loss of a child by easing the financial and emotional burden of funeral expenses.

**Scholarships:** provides children diagnosed with cancer and their siblings with financial assistance to pursue secondary education, empowering them to achieve their academic dreams despite the challenges they face





# MENTAL HEALTH

**Counseling Services:** A lifeline offering compassionate, specialized support as families navigate the emotional toll of childhood cancer.

**Teen Scene & Teen Sibs:** providing teenagers a safe space to connect, be heard, and find support among peers who truly understand their experiences. Through fun, engaging, and therapeutic activities, teens build resilience, friendship, and confidence while navigating the unique challenges of their journey.

**Creative Expressions:** Programs designed to provide families emotional relief through creative outlets helping them process their cancer journey

**Angel Parents and Angel Sibs:** Grief Support Groups for parents and siblings provide a compassionate, understanding community for families navigating the unimaginable loss of a child.

**Day of Remembrance:** Families come together to honor the child lost to cancer reaffirming no family carries their grief journey alone.





## IMPACT AREAS

# SOCIAL ENRICHMENT

**Camp Firefly:** Provides a weeklong camp for diagnosed children and siblings ages 9-17 a fun-filled, supportive space to connect, create memories, and find moments of healing and normalcy

**Camp Firefly Jr:** Overnight camp for diagnosed children and siblings ages 7-8 in a safe, nurturing, and fun-filled environment to explore, make friends, and experience joy and confidence

**Halloween Bash:** A spooktacular celebration for Candlelighters families to come together for food, games, rides, trunk & treat, and fun.

**Spring Fling:** A joyful, celebratory event filled with games, food, connection, and lasting memories





# SPONSORSHIP OPPORTUNITIES

## SIGNATURE EVENTS

Align your company with high-impact, inspirational events:

**Spring Fling:** Games, rides, food, crafts, and fun bringing joy to all

**Camp Firefly** — Summer camp for children with cancer and siblings

**Day of Remembrance** — Honoring children lost, comforting their families

**Superhero 5K** — Our largest annual fundraising event for the whole community

**Halloween Bash:** Spooktacular celebration with trunk & treat, rides, games, and food.

Sponsorships start at \$1000 and offer branding, team-building, and media engagement.





# PROGRAM SUPPORT

## SIGNATURE PROGRAMS

Provide care, comfort, and healing to families as they navigate their cancer journey:

**Adopt-a-Family & Thanksgiving Meals**— Brightening the season for families in crisis

**Sibling & Survivor Scholarships** — Financial support for tuition, books, and supplies

**Teen Scene & Teen Sibs** — Safe space for teens to connect with their peers providing monthly peer support

“TEEN SCENE MADE ME FEEL SEEN AND UNDERSTOOD ”







# SIGNATURE EVENTS

## SPONSORSHIP OPPORTUNITIES

Align your company with high-impact, inspirational events:

### Camp Firefly

Summer camp for children with cancer and siblings

### Superhero 5K

Our largest annual fundraising event

### Day of Remembrance

Honoring children lost, comforting their families

### Halloween Bash

Honoring children lost, comforting their families

### Adopt-a-Family & Thanksgiving Meals

Brightening the season for families in crisis

Sponsorships start at \$1,000 and offer branding, team-building, and media engagement.



SIGNATURE  
EVENT

# SPRING FLING

Date: Saturday, March 28, 2026  
Location: Sunset Park  
Participants: 200 + youth and families

The Spring Fling is an annual event that brings a day filled with **fun activities, laughter, a sense of community**, and a much-needed break to our families. It's a joyful way to connect with others facing similar challenges.

## SPONSORSHIP LEVELS

- \$1,000** — Carnival game booth, Name/Logo on event banner
- \$2,500** - All above + Social Media highlights
- \$5,000** — Carnival ride, all above + Logo on instruction packet and thank you letter
- \$10,000** - All above + one extra carnival booth, press release mention and logo on dining table
- \$20,000** - All above + Logo on Candlelighters website, name on all printed materials, choice of premier space activation and check presentation opportunity

"Spring Fling gave our child a day filled with laughter and hope — a chance just to be a kid again surrounded by joy and support. For our family, it was a beautiful reminder that we are not alone on this journey." — Candlelighters Family





SIGNATURE  
EVENT

# CAMP FIREFLY

Date: TBD

Location: YMCA Camp Whittle: Big Bear, CA

Participants: 100+ children & siblings

Each year diagnosed children, survivors, siblings, and bereaved siblings make an escape to the California mountains completely free of charge, and we thank our generous donors and sponsors who make this magical time at Camp Firefly possible.

## SPONSORSHIP LEVELS

\$20,000 - Presenting Sponsor

\$10,000 - Transportation Sponsor

\$7,500 - Food Sponsor

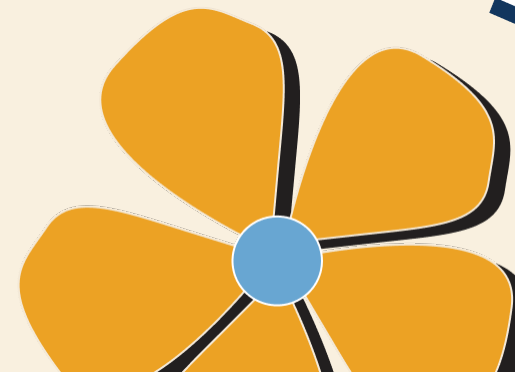
\$5,000 - Activity Sponsor

\$3,000 - Camp Shirt sponsor

\$1,500 - Send a kid to camp

*"At camp, I felt like a regular kid again."*

— Karate Kid, childhood cancer survivor camper





SIGNATURE  
EVENT

# SUPERHERO 5K

Date: Annually each September  
Location: Exploration Peak Park  
Participants: 2,000+

Be a hero at the Candlelighters Superhero 5k! This family and pet-friendly fun run brings the community together to support local families battling childhood cancer. Participants enjoy food, games, a kid's zone with an inflatable obstacle course, and superheroes in full costume at this high-energy fundraising event.

## SPONSORSHIP OPPORTUNITIES

Sponsorship packages include race registrations, brand inclusion on marketing materials, information booths at the event, inclusion on signage, and opportunities to include materials in registration packets.

\$15,000 - Ironman

\$10,000 - Superman

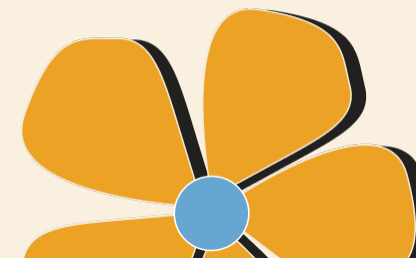
\$7,500 - Wonder Woman

\$5,000 - Captain America

\$3,500 - Batman

\$1,500 - Hulk

Sponsorships  
\$1,500–\$15,000





SIGNATURE  
EVENT

# HALLOWEEN BASH

Date: Annually in late October

Location: TBD

Participants: 650+ youth and families participate

Families with diagnosed children or bereaved siblings ages 12 or under are invited to enjoy a fall festival with games, prizes, dinner, and trunk-or-treating in a safe environment.

## SPONSORSHIP OPPORTUNITIES

**\$1,000** - Trunk or Treat parking spot, Name/Logo on event banner

**\$2,500** - All above + Social Media highlights

**\$5,000** - All above + Logo on instruction packet and thank you letter

**\$10,000** - All above + one extra parking spot, press release mention and logo on dining table

**\$20,000** - All above + Logo on Candlelighters website, name on all printed materials, choice of premier space activation and check presentation opportunity

"This was our first year enjoying this event and my kid had a blast. Everyone was so nice. Food was great. The environment was peaceful and fun."

— Candlelighters Family

Sponsorships  
\$1,000—\$20,000





## SIGNATURE PROGRAM

# HOLIDAY ADOPT-A-FAMILY

Date: Annually in December

Location: Varies

Participants: 145+ Families

Help a Candlelighters Family enjoy the holiday season without additional stress. Families undergoing treatment have frequent medical appointments with copays for doctor visits, hospital stays, and prescriptions creating a financial burden. Bereaved families may struggle with the emotional burden of a lost loved one.

The holidays are overwhelming for many Candlelighters families who lack the emotional or financial means for gift shopping. Generous donors can “adopt” local families to help ease these burdens.

### DONATIONS NEEDED:

Holiday Toys and Gift Cards

Household Items

Toiletries, Supplies, and Other Basic Needs





# ADDITIONAL FUNDING OPPORTUNITIES



## FINANCIAL ASSISTANCE

- 2 Southern Nevada families diagnosed each week
- Treatment: 2.5–3.5 years
- 388 families (1,628 people) supported
- Emergency support: 2 rent/mortgage payments per family
- Covers housing, utilities, food, transportation

## HOUSING ASSISTANCE

- Assist with rent, mortgage, and utilities
- Ensures safe, stable homes for families in treatment
- Supports those facing income loss or relocation
- Prevents housing insecurity, keeps families together

## TRAVEL FOR TREATMENT

- 40% of local families travel out of state for care
- Covers lodging, transportation, airfare, gas, and meals
- Ensures every child can access life-saving treatment

## LOCAL TRANSPORT ASSISTANCE

- Reliable rides for medical appointments
- Covers rideshare, treatment, follow-ups, urgent care
- Reduces missed appointments and delays







# ADDITIONAL FUNDING OPPORTUNITIES

## COUNSELING SERVICES

- Free counseling for children, siblings, and parents
- 75% of children experience trauma symptoms
- Sessions up 225% since 2020—demand surging
- One-third of our new building is for emotional support

## CO-PAY REIMBURSEMENT

- Covers out-of-pocket medical and prescription co-pays
- Relieves financial strain not covered by insurance
- Prevents treatment delays, supports family well-being

## BEREAVEMENT ASSISTANCE

- Covers funeral and burial expenses
- Relieves families' financial burden during loss
- Honors every child's life with dignity and care





# THANK YOU!



Help light the way for families facing childhood cancer.

[www.candlelightersnv.org](http://www.candlelightersnv.org) | [development@candlelightersnv.org](mailto:development@candlelightersnv.org)

